



Mounting Form Table

P100
10 A

Section

Front Mounting Switches	A
Two hole mounting	A1
Four hole mounting	A2
Single hole mounting \varnothing 16 mm / \varnothing 22,5 mm	A3

Sälzer Electric GmbH
Matthiasstraße 16
57482 Wenden (Germany)
www.saelzer.com

Headquarters:
Tel. +49 (0) 27 62 / 6 14-110
Fax +49 (0) 27 62 / 6 14-100
sales@salzer.de

Originator: Sälzer Electric GmbH · Product Data Management (PDM) · 09306 Rochlitz (Germany)
Copyright reserved by Sälzer Electric GmbH. This document replaces all previous issues.
Valid until a new version is published. Changes and revisions reserved.

Mounting Form Table



Mtg. Form Pages

003M1	A1-1	(4)
013M1	A2-1	(7)
013V1	A2-2	(8)
014V1	A2-2	(8)
033M1	A1-2	(5)
033M4	A1-2	(5)
036M1	A2-3	(9)
036M4	A2-3	(9)
036V1	A2-4	(10)
036V4	A2-4	(10)
113M1	A2-5	(11)
219M1	A3-1	(13)
218M1	A3-2	(14)
S001.	A3-3	(15)
R001.	A3-4	(16)



Section A

Page
from to

Two hole mounting

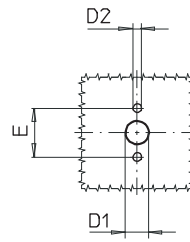
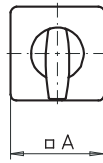
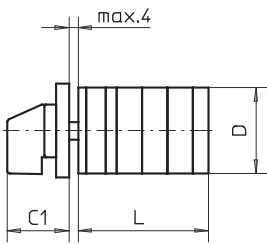
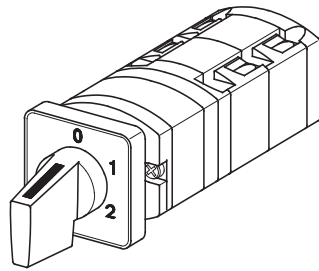
A1-1

A1-2

Originator: Sälzer Electric GmbH · Product Data Management (PDM) · 09306 Rochlitz (Germany)
Copyright reserved by Sälzer Electric GmbH. This document replaces all previous issues.
Valid until a new version is published. Changes and revisions reserved.

Front Mounting Switches

sälzer



**Product line
P100**

Front mounting switch

**Two hole mounting
20 mm**

003M1 (IP66)

Complete switch	Poles	Product line	Rated data (IEC 60947)			Order code number
			Operational current I _e	Operational power at 380-440V		
			AC-21A A	AC-23A kW	AC-3 kW	
Rotary Cam Switch Switching angle 30°/45°/60°/90°	1 ... 16	P100	10	3	2,2	P110 - 61 ... - 003M1

SMD modules for basic switch A01

Mounting form module for 003M1

P100

BFA1 - 003

M-operator module 30 x 30 mm, mounting form 003M1

1AM1

Escutcheon black, handle black

Legend plate silver, operator module 003M1

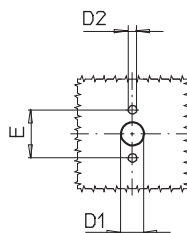
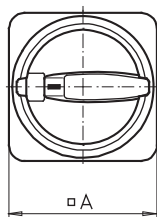
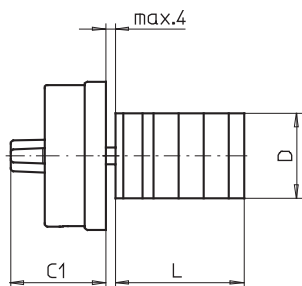
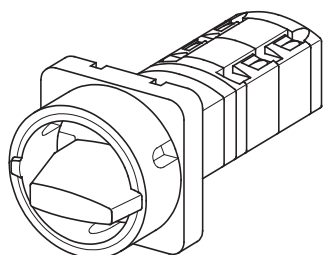
FAS1 - (FA number)

Dimensions in mm

Type	A	C1	D	D1	D2	E	L with ... stages							
							1	2	3	4	5	6	7	8
P110	30	24	29	8	3,2	20	39	51	63	75	87	99	111	123

Front Mounting Switches

sälzer



**Product line
P100**

Front mounting switch

**Two hole mounting
20 x 20 mm**

**033M1 (IP66)
033M4 (IP66)**

Complete switch	Poles	Product line	Rated data (IEC 60947)			Order code number
			Operational current I _e	Operational power at 380-440V		
			AC-21A A	AC-23A kW	AC-3 kW	
Main Switch Switching angle 90° OFF position padlockable 09h	1 ... 16	P100	10	3	2,2	P110 - 61 ... - 033M1
Main/Emergency-Off Switch Switching angle 90° OFF position padlockable 09h	1 ... 16	P100				P110 - 61 ... - 033M4

SMD modules for basic switch A01

Mounting form module for 033M.

P100

BFA1- 033

M-padlock device 48 x 48 mm, mounting form 033M1
Escutcheon black, padlockable handle black

1BM1

M-padlock device 48 x 48 mm, mounting form 033M4
Escutcheon yellow, padlockable handle red

1BM4

Dimensions in mm

Type	A	C1	D	D1	D2	E	L with ... stages							
							1	2	3	4	5	6	7	8
P110	48	31	29	8	3,2	20	39	51	63	75	87	99	111	123



Section A

Page
from to

Four hole mounting

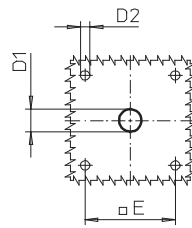
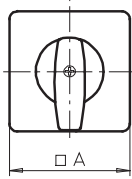
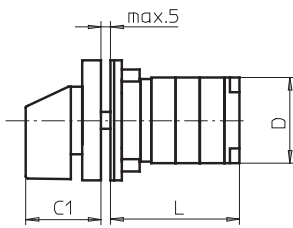
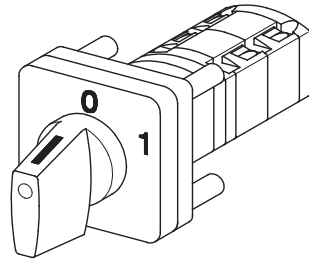
A2-1

A2-5

Originator: Sälzer Electric GmbH · Product Data Management (PDM) · 09306 Rochlitz (Germany)
Copyright reserved by Sälzer Electric GmbH. This document replaces all previous issues.
Valid until a new version is published. Changes and revisions reserved.

Front Mounting Switches

sälzer



**Product line
P100**

Front mounting switch
Operator module of next size

Four hole mounting
36 x 36 mm

013M1 (IP66)

Complete switch	Poles	Product line	Rated data (IEC 60947)			Order code number
			Operational current I _e	Operational power at 380-440V		
			AC-21A A	AC-23A kW	AC-3 kW	
Rotary Cam Switch Switching angle 30°/45°/60°/90°	1 ... 16	P100	10	3	2,2	P110 - 61 ... - 013M1

SMD modules for basic switch A01

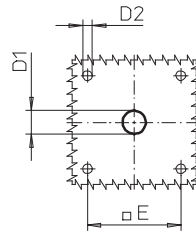
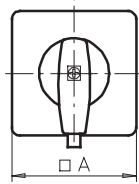
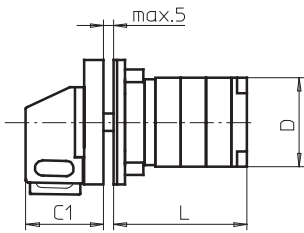
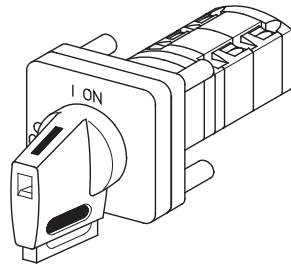
Mounting form module for 013M1	P100	BFA1 - 013
M-operator module 48 x 48 mm, mounting form 013M1		2AM1
Escutcheon black, handle black		
Legend plate silver, operator module 013M1		FAS2 - (FA number)

Dimensions in mm

Type	A	C1	D	D1	D2	E	L with ... stages							
							1	2	3	4	5	6	7	8
P110	48	32	29	12	4,5	36	39	51	63	75	87	99	111	123

Front Mounting Switches

sälzer



**Product line
P100**

Front mounting switch
Operator module of next size

Four hole mounting
36 x 36mm

013V1 (IP66)

014V1 (IP66)

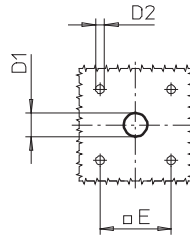
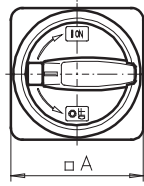
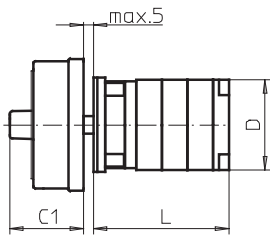
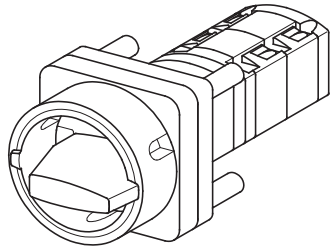
Complete switch	Poles	Product line	Rated data (IEC 60947)			Order code number
			Operational current I _e	Operational power at 380-440V		
			AC-21A A	AC-23A kW	AC-3 kW	
Rotary Cam Switch Switching angle 30°/45°/60°/90° Padlockable 12h	1 ... 16	P100	10	3	2,2	P110 - 61 ... - 013V1
Rotary Cam Switch Switching angle 30°/45°/60°/90° 3 positions padlockable (09h/12h/03h)	1 ... 16	P100				P110 - 61 ... - 014V1

SMD modules for basic switch A01						
Mounting form module for 013V1/ 014V1					P100	BFA1 - 013
V-operator module 48 x48 mm, mounting form 013V1 Escutcheon black, handle black						2AV1 - 12
V-operator module 48x48 mm, mounting form 014V1 Escutcheon black, handle black						2AV1 - 99
Legend plate silver, operator module 013V1/ 014V1						FAS2 - (FA number)

Dimensions in mm														
Type	A	C1	D	D1	D2	E	L with ... stages							
							1	2	3	4	5	6	7	8
P110	48	32	29	12	4,5	36	39	51	63	75	87	99	111	123

Front Mounting Switches

sälzer



**Product line
P100**

Front mounting switch

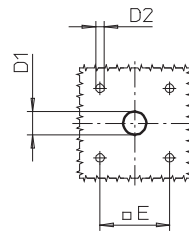
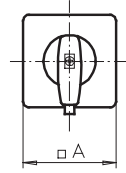
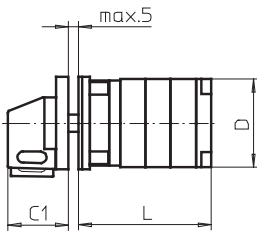
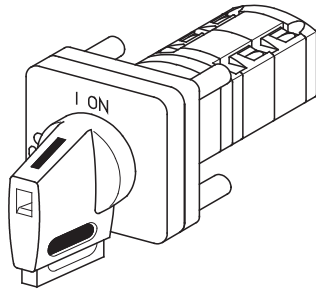
**Four hole mounting
36 x 36 mm**

**036M1 (IP66)
036M4 (IP66)**

Complete switch	Poles	Product line	Rated data (IEC 60947)			Order code number								
			Operational current I _e AC-21A A	Operational power at 380-440V AC-23A kW	AC-3 kW									
Main Switch Switching angle 90° OFF position padlockable 09h	1 ... 16	P100	10	3	2,2	P110 - 61 ... - 036M1								
Main/Emergency-Off Switch Switching angle 90° OFF position padlockable 09h	1 ... 16	P100	10	3	2,2	P110 - 61 ... - 036M4								
SMD modules for basic switch A01														
Mounting form module for 036M.			P100			BFA1 - 013								
M-padlock device 48 x 48 mm, mounting form 036M1 Escutcheon black, padlockable handle black						2BM1								
M-padlock device 48 x 48 mm, mounting form 036M4 Escutcheon yellow, padlockable handle red						2BM4								
Dimensions in mm														
Type	A	C1	D	D1	D2	E	L with ... stages							
							1	2	3	4	5	6	7	8
P110	48	33	29	12	4,5	36	39	51	63	75	87	99	111	123

Front Mounting Switches

sälzer



**Product line
P100**

Front mounting switch
Operator module of next size

Four hole mounting
36 x 36 mm

036V1 (IP66)

036V4 (IP66)

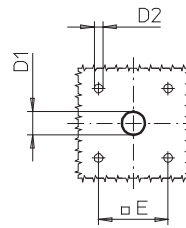
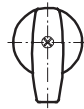
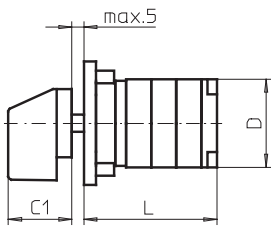
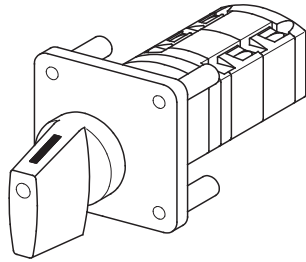
Complete switch	Poles	Product line	Rated data (IEC 60947)			Order code number
			Operational current I _e	Operational power at 380-440V		
			AC-21A A	AC-23A kW	AC-3 kW	
Main Switch Switching angle 90° OFF position padlockable 09h	1 ... 16	P100	10	3	2,2	P110 - 61 ... - 036V1
Main/Emergency-Off Switch Switching angle 90° OFF position padlockable 09h	1 ... 16	P100				P110 - 61 ... - 036V4

SMD modules for basic switch A01						
Mounting form module for 036V.					P100	BFA1 - 013
V-operator module 48 x 48 mm, mounting form 036V1 Escutcheon black, handle black						2AV1 - 09
Legend plate silver, operator module 036V1						FAS2 - 9078
V-operator module 48 x 48 mm, mounting form 036V4 Escutcheon black, handle red						2AV4 - 09
Legend plate yellow, operator module 036V4						FBS2 - 9078

Dimensions in mm														
Type	A	C1	D	D1	D2	E	L with ... stages							
							1	2	3	4	5	6	7	8
P110	48	32	29	12	4,5	36	39	51	63	75	87	99	111	123

Front Mounting Switches

sälzer



**Product line
P100**

Front mounting switch
Operator module of next size
without escutcheon

Four hole mounting
36 x 36 mm

113M1 (IP66)

Complete switch	Poles	Product line	Rated data (IEC 60947)			Order code number							
			Operational current I _e	Operational power at 380-440V									
			AC-21A A	AC-23A kW	AC-3 kW								
Rotary Cam Switch Switching angle 30°/45°/60°/90°	1 ... 16	P100	10	3	2,2	P110 - 61 ... - 113M1							
SMD modules for basic switch A01													
Mounting form module for 113M1 (Shaft shortened by 5 mm)				P100		BFA1 - 113							
M-handle black, mounting form 113M1 (mounting without escutcheon and legend plate)						2XM1							
Dimensions in mm													
Type	C1	D	D1	D2	E	L with ... stages							
						1	2	3	4	5	6	7	8
P220	32	29	12	4,5	36	39	51	63	75	87	99	111	123



Section A

Page
from to

Single hole mounting \varnothing 16 mm / \varnothing 22,5 mm

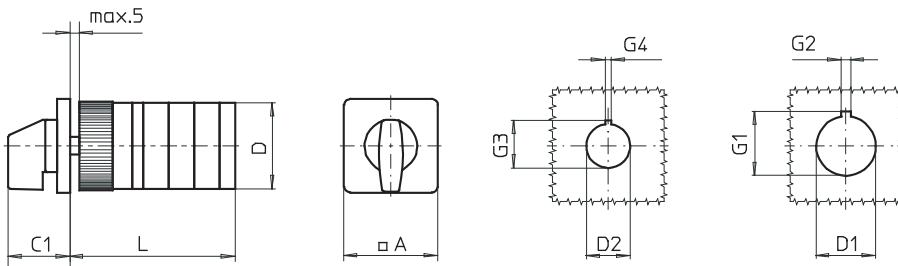
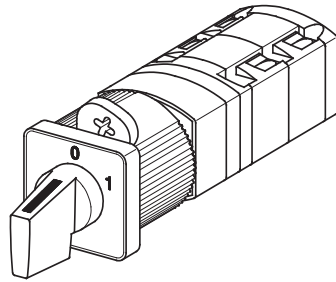
A3-1

A3-4

Originator: Sälzer Electric GmbH · Product Data Management (PDM) · 09306 Rochlitz (Germany)
Copyright reserved by Sälzer Electric GmbH. This document replaces all previous issues.
Valid until a new version is published. Changes and revisions reserved.

Front Mounting Switches

sälzer



**Product line
P100**

Front mounting switch

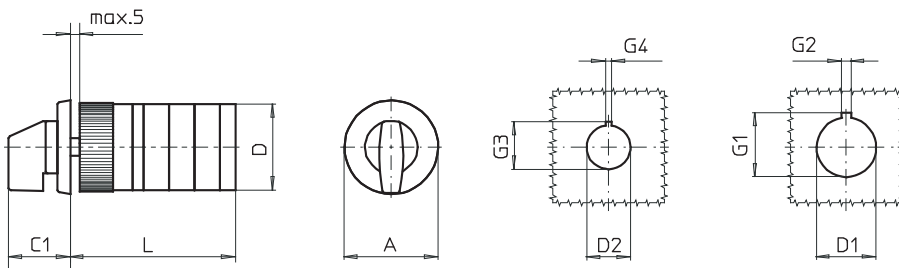
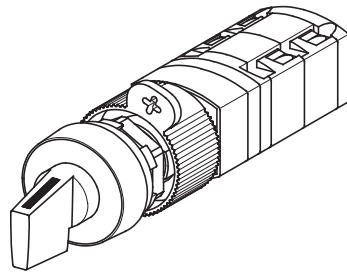
Single hole mounting
ø 16 mm / 22,5 mm

219M1 (IP66)

Complete switch	Poles	Product line	Rated data (IEC 60947)			Order code number								
			Operational current I _e	Operational power at 380-440V										
			AC-21A A	AC-23A kW	AC-3 kW									
Rotary Cam Switch Switching angle 30°/ 45°/ 60°/ 90°	1 ... 16	P100	10	3	2,2	P110 - 61 ... - 219M1								
SMD modules for basic switch A01														
Mounting form module for 219M1			P100			BFA1 - 219								
M-operator module 30 x 30 mm, mounting form 219M1						1CM1								
Escutcheon black, handle black														
Legend plate silver, operator module 219M1						FAS1 - (FA number)								
Dimensions in mm														
Type	A	C1	D	D1	D2	G1	G2	G3	G4	L with ... stages (max. 8)				each add. stage
										1	2	3	4	
P110	30	26	29	22,5	16,2	24,2	3,2	17,9	1,7	57	69	81	93	12

Front Mounting Switches

sälzer



**Product line
P100**

**Front mounting switch
with front ring**

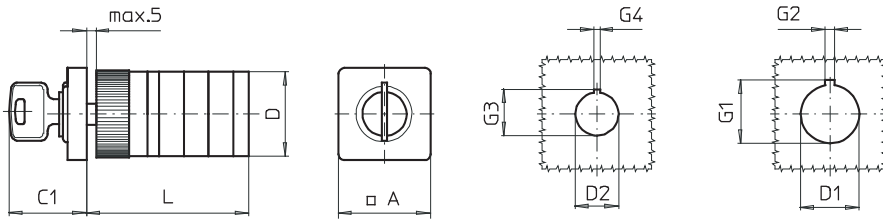
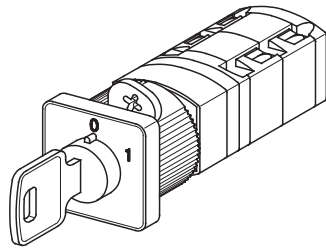
**Single hole mounting
ø 16 mm / 22,5 mm**

218M1 (IP66)

Complete switch	Poles	Product line	Rated data (IEC 60947)			Order code number								
			Operational current I _e	Operational power at 380-440V										
			AC-21A A	AC-23A kW	AC-3 kW									
Rotary Cam Switch Switching angle 30°/45°/60°/90°	1 ... 16	P100	10	3	2,2	P110 - 61 ... - 218M1								
SMD modules for basic switch A01 Mounting form module for 218M1 Frontring black ø 30 mm, M-handle black, mounting form 218M1 (mounting with front ring without inscription)			P100			BFA1 - 219 1DM1								
Dimensions in mm														
Type	A	C1	D	D1	D2	G1	G2	G3	G4	L with ... stages (max. 8)				each add. stage
P110	30	26	29	22,5	16,2	24,2	3,2	17,9	1,7	1	2	3	4	12
										57	69	81	93	

Front Mounting Switches

sälzer



**Product line
P100**

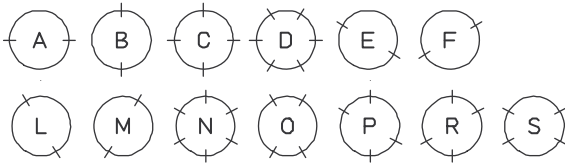
**Front mounting switch
key operated**

**Single hole mounting
ø 16 mm / 22,5 mm**

S001. (IP40)

Complete switch	Poles	Product line	Rated data (IEC 60947)			Order code number
			Operational current I _e	Operational power at 380-440V		
			AC-21A A	AC-23A kW	AC-3 kW	
Rotary Cam Switch Switching angle 30°/ 45°/ 60°/ 90°	1 ... 12	P100	10	3	2,2	P110 - 61 ... - S001.

The dot in the order code number of the complete mounting form/operator module must be replaced by the classification letter which identifies the key removable positions:



Lines indicate the key removable positions.

SMD modules for basic switch A01

Mounting form module for S001.

P100

BFA1- S

operator module 30 x 30 mm, mounting form S001.

P100

1AS1-001.

Escutcheon black, Ronis cylinder lock L001, 2 keys

Legend plate silver, operator module S001.

FAS1 - (FA number)

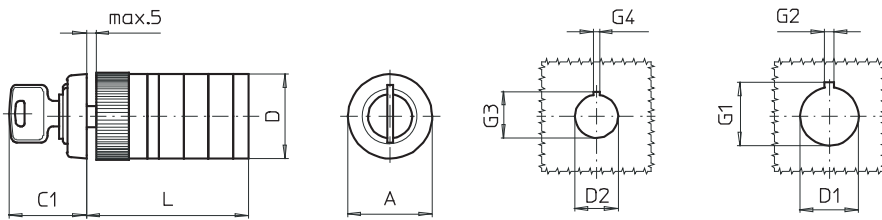
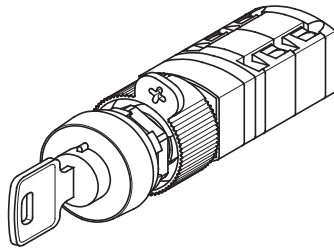
Further lock types and security lock on request.

Dimensions in mm

Type	A	C1	D	D1	D2	G1	G2	G3	G4	L with ... stages (max. 8)				each add. stage
										1	2	3	4	
P110	30	26	29	22,5	16,2	24,2	3,2	17,9	1,7	57	69	81	93	12

Front Mounting Switches

sälzer



**Product line
P100**

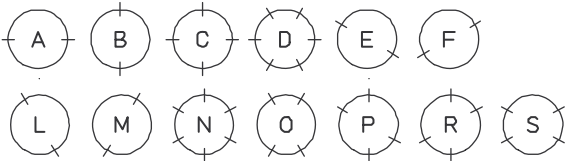
Front mounting switch
with front ring
key operated

Single hole mounting
ø 16 mm / 22,5 mm

R001. (IP40)

Complete switch	Poles	Product line	Rated data (IEC 60947)			Order code number
			Operational current I _e	Operational power at 380-440V		
			AC-21A A	AC-23A kW	AC-3 kW	
Rotary Cam Switch Switching angle 30°/ 45°/ 60°/ 90°	1 ... 12	P100	10	3	2,2	P110 - 61 ... - R001.

The dot in the order code number of the complete mounting form/operator module must be replaced by the classification letter which identifies the key removable positions:



Lines indicate the key removable positions.

SMD modules for basic switch A01

Mounting form module for R001.
Front ring black ø 30 mm, mounting form R001.
Ronis cylinder lock L001, 2 keys
(mounting with front ring without inscription)
Further lock types and security lock on request.

P100

**BFA1 - S
1BS1-001.**

Dimensions in mm

Type	A	C1	D	D1	D2	G1	G2	G3	G4	L with ... stages (max. 8)				each add. stage
										1	2	3	4	
P110	30	26	29	22,5	16,2	24,2	3,2	17,9	1,7	57	69	81	93	12



Faster deliveries through SMD

In order to ensure even greater flexibility for worldwide supply availability within 24h, Sälzer Electric has introduced the SMD (Sälzer Modular Design) system.

SMD modules are individually prefabricated and tested all-in-one modules which SMD Service holds in stock in sufficient quantities. From basic switch modules, mounting form modules and operator modules, SMD Service can assemble a complete switch requested by the customer and pack it ready for delivery in just a few actions.

– **back** –